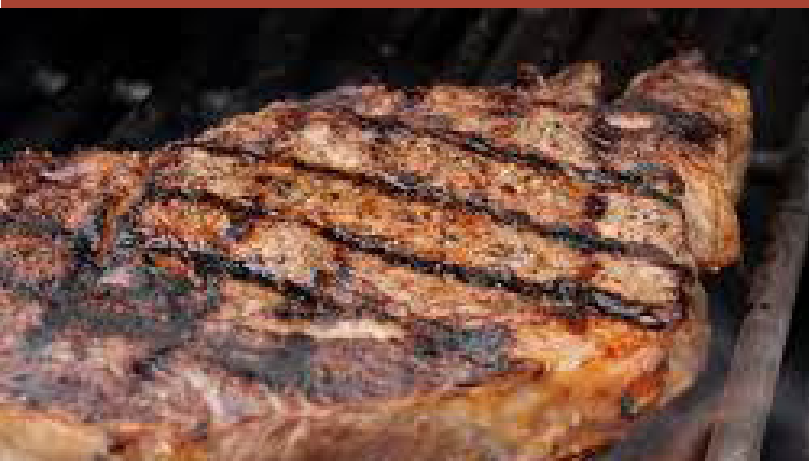




The Economic Impact of the Wisconsin Beef Industry



Wisconsin's beef industry has grown considerably in the past 20 years.

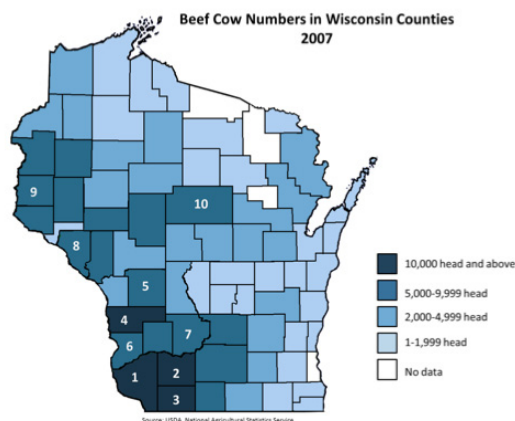
- Since 1987, the cattle feeding industry has doubled with over 250,000 head of cattle on feed in the state, putting Wisconsin at 12th in the U.S. in this category.

- Since 1986, the beef cow inventory in the U.S. has decreased by 8.5%, while Wisconsin's beef cow herd has grown over 44%.

On-farm beef production and beef processing:

- Provides 35,100 jobs in Wisconsin
- Contributes \$2.1 billion in total income
- Accounts for \$6.94 billion on farm and processing revenue
- Generates over \$200 million in state and local government revenues

Much of the state's beef cow herd is located in western and southwestern portions of the state. Grant County, the state's top beef cow county, has nearly 10% of the state's beef cows

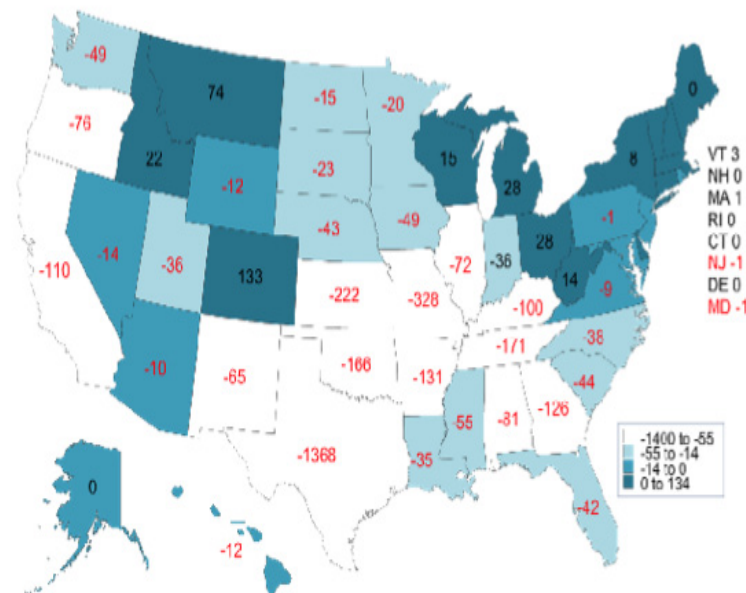
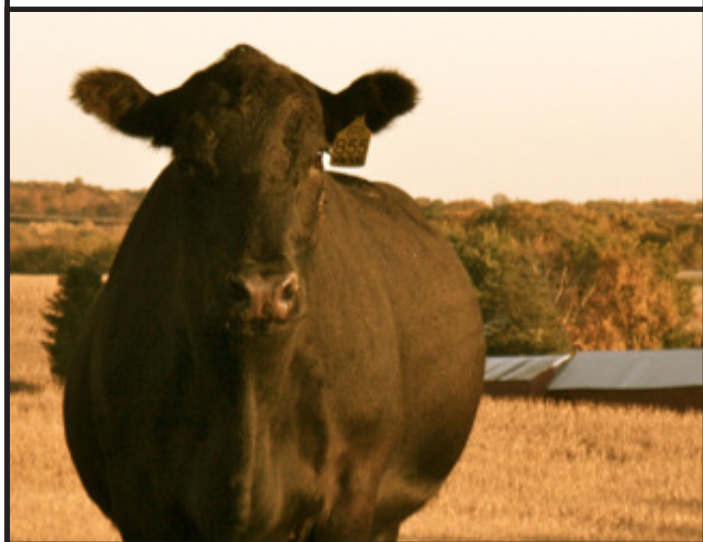


County	Beef Cow Inventory
Grant	25,017
Iowa	12,231
Lafayette	11,797
Vernon	10,365
Monroe	9,129
Crawford	8,770
Sauk	8,090
Buffalo	7,760
St. Croix	7,291
Marathon	6,540

Category	Industry Itself	Economic Contribution	Muliplier	Percent of Wisconsin Total
On-Farm Beef				
Employment	\$9,812	\$14,210	1,448	0.41%
Labor Income	\$93,415,762	\$270,522,488	2.896	0.18%
Total Income	\$291,419,173	\$631,573,281	2.167	0.26%
Industry Sales	\$1,216,733,926	\$1,856,381,263	1,533	0.40%
Beef Processing				
Employment	\$6,845	\$20,921	3,056	0.61%
Labor Income	\$368,714,191	\$993,084,198	2.693	0.66%
Total Income	\$423,454,656	\$1,469,454,183	3,470	0.61%
Industry Sales	\$3,082,472,448	\$4,891,999,854	1.587	1.05%
On Farm and Processing				
Employment	\$16,657	\$35,101	2.107	1.02%
Labor Income	\$462,129,953	\$1,263,035,885	2.773	0.84%
Total Income	\$714,873,829	\$2,100,091,195	2.938	0.87%
Industry Sales	\$4,299,206,374	\$6,939,831,758	1.614	1.49%

Additional impacts in Wisconsin:

- For every ten jobs in on-farm beef operations, there are an additional 4.5 jobs supported
- Every \$100 of income (wages, salaries, etc.) generated by beef farms provides an additional \$117 of income elsewhere in the Wisconsin economy



Livestock Marketing Information Center, Data Source: USDA-NASS

Change in Beef Cow Numbers from January 1, 2003 to January 1, 2013 (1000 Head)

In the past 10 years, Wisconsin is only one of ten states that have increased beef cow numbers and it had the second largest growth behind Oklahoma.

Source: 2013 State of Wisconsin's Beef Cattle Industry. Dr. Amy Radunz, Department of Animal and Food Science, University of Wisconsin-River Falls and Dr. Steve Deller, Department of Agricultural Economics, University of Wisconsin-Madison.